

# Installation Manual

CUPRA FORMENTOR 5DR  
CUP-FORM-5-A



## Shades



Side Shades



Port Shades



Tailgate Shades

## Fixing Clips



CL-M12 x 4



CL-M02 x 4



CL-M11 x 2



CL-M14 x 1



CL-T01 x 1

# Installation

CUPRA FORMENTOR 5DR  
CUP-FORM-5-A

## Components Needed



Side Shades



CL-M12 x 2



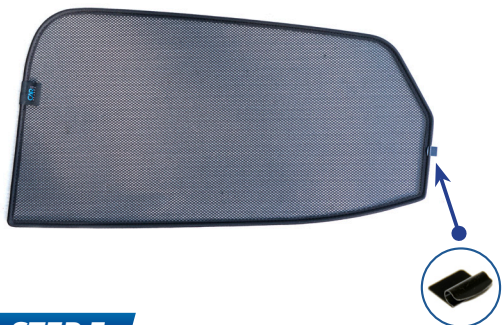
CL-M11 x 2



CL-T01 x 1

## Side Shade Installation

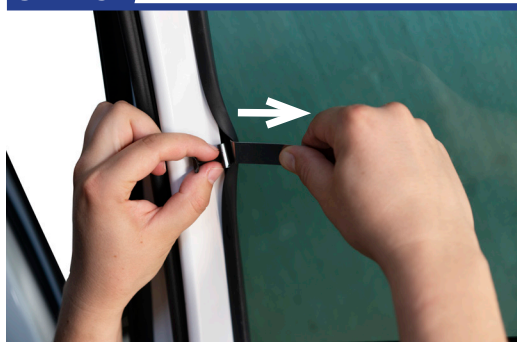
### STEP 1



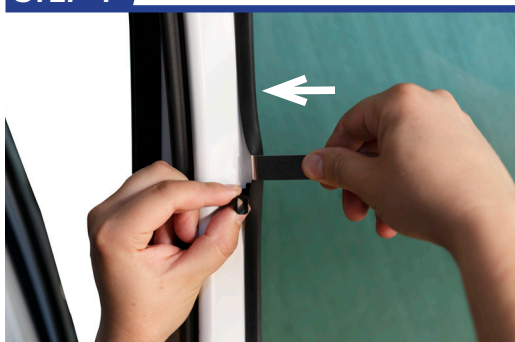
### STEP 2



### STEP 3



### STEP 4



### STEP 5



### STEP 6



# Installation

CUPRA FORMENTOR 5DR

CUP-FORM-5-A

## Side Shade Installation

### STEP 7



### STEP 8



### STEP 9



### STEP 10



*Repeat this whole process for the other side.*



# Installation

CUPRA FORMENTOR 5DR  
CUP-FORM-5-A

## Components Needed



Port Shades



CL-M02 x 4

## Port Shade Installation

### STEP 1



### STEP 2



### STEP 3



### STEP 4



### STEP 5



### STEP 6



Repeat this whole process for the other side.

# Installation

CUPRA FORMENTOR 5DR  
CUP-FORM-5-A

## Components Needed



Tailgate Shades



CL-M12 x 2



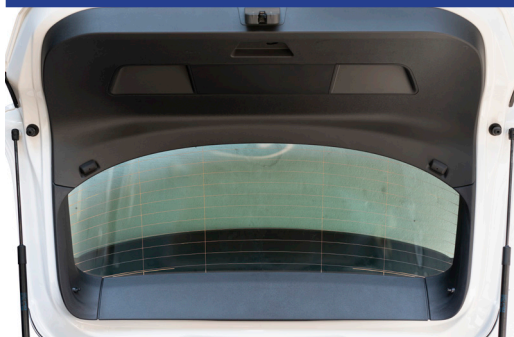
CL-M14 x 1

## Tailgate Shade Installation

### STEP 1



### STEP 2



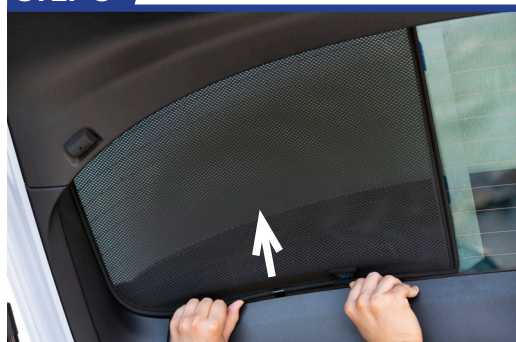
### STEP 3



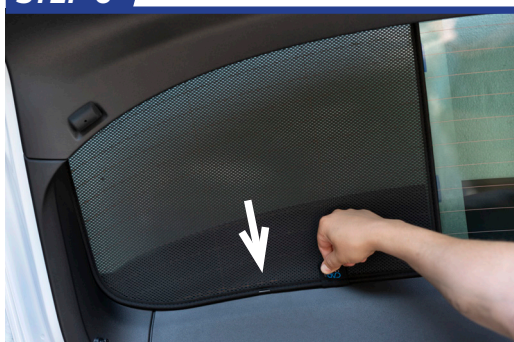
### STEP 4



### STEP 5



### STEP 6





# Installation

CUPRA FORMENTOR 5DR

CUP-FORM-5-A

## Tailgate Shade Installation

### STEP 7

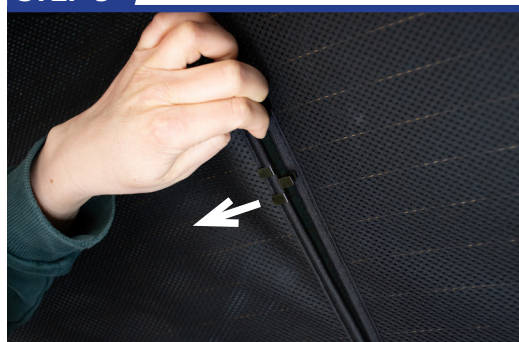


Repeat this whole process for the other side.

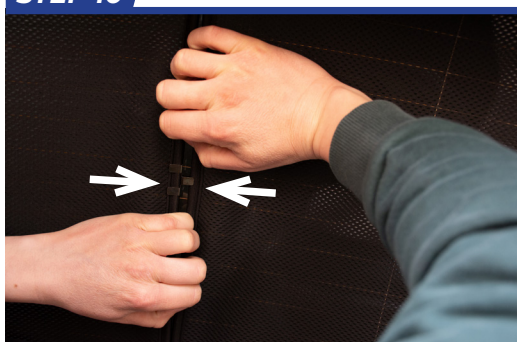
### STEP 8



### STEP 9



### STEP 10



### STEP 11

