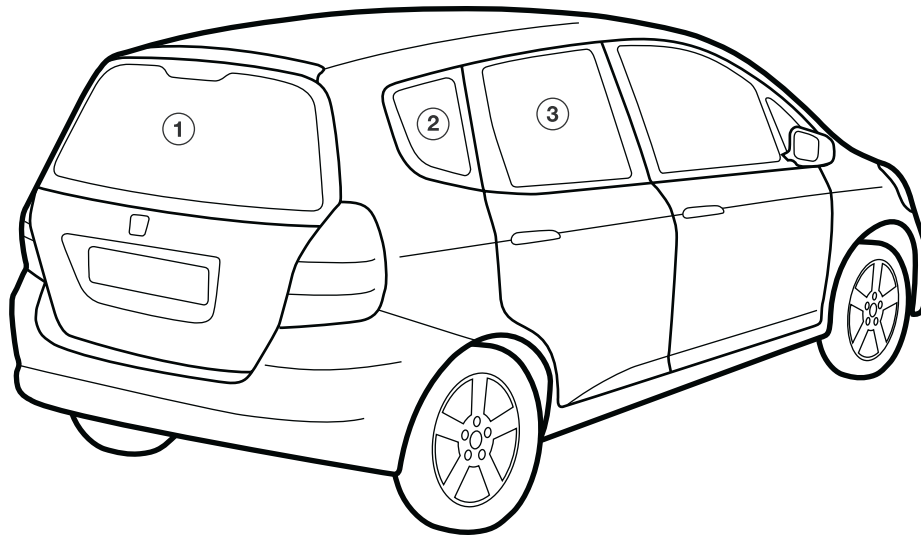


# JAZZ - SUN BLIND INSTALLATION INSTRUCTIONS

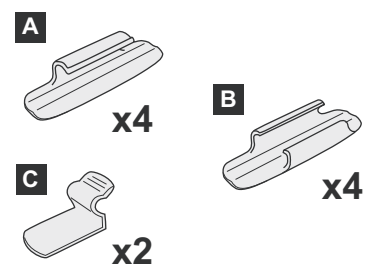
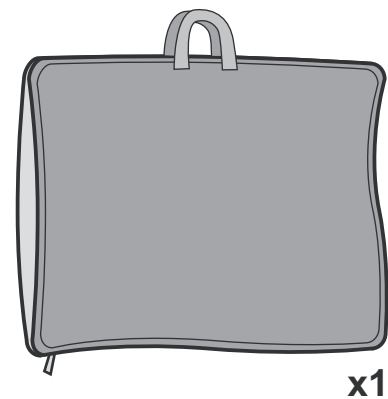
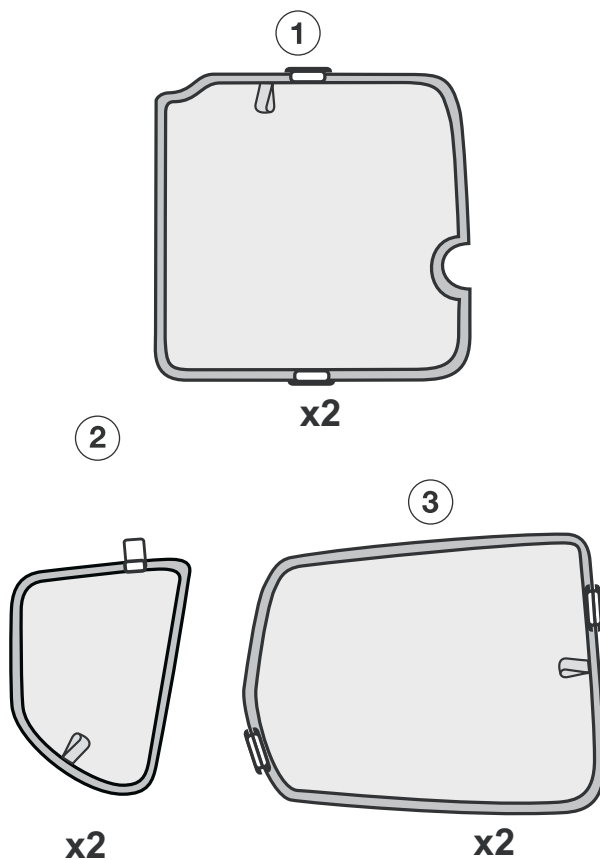
PART NUMBER: 08R13-SAA-6000

VEHICLE DESCRIPTION:

JAZZ SUNBLINDS



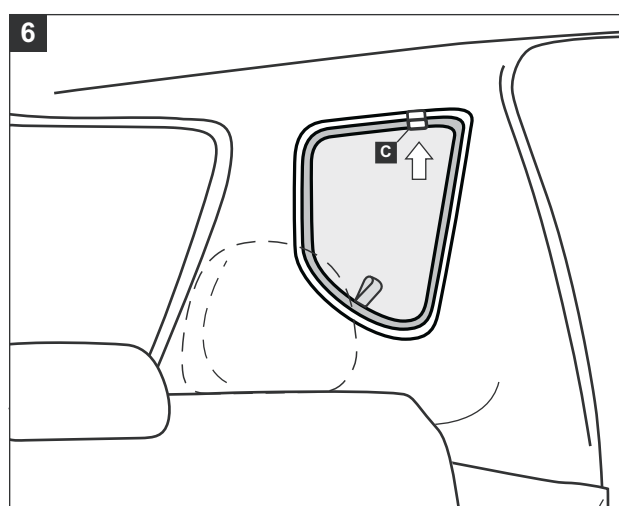
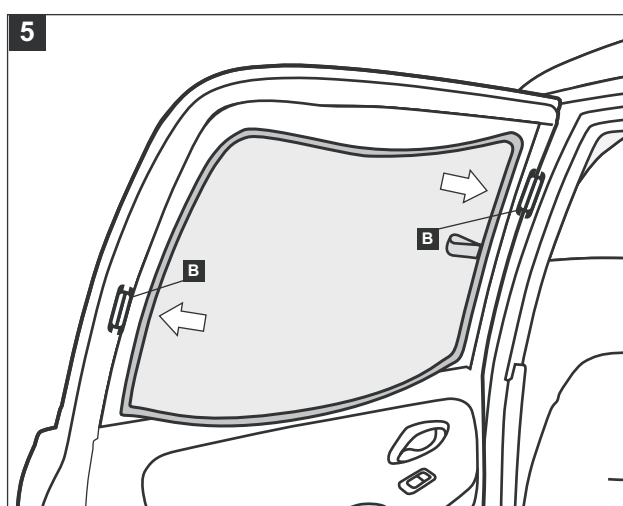
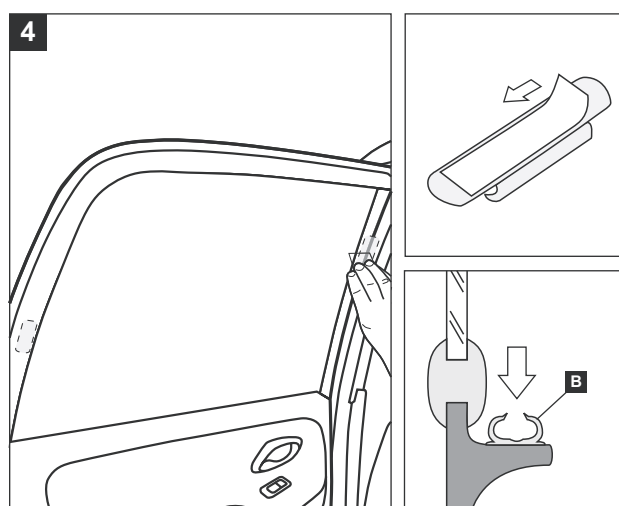
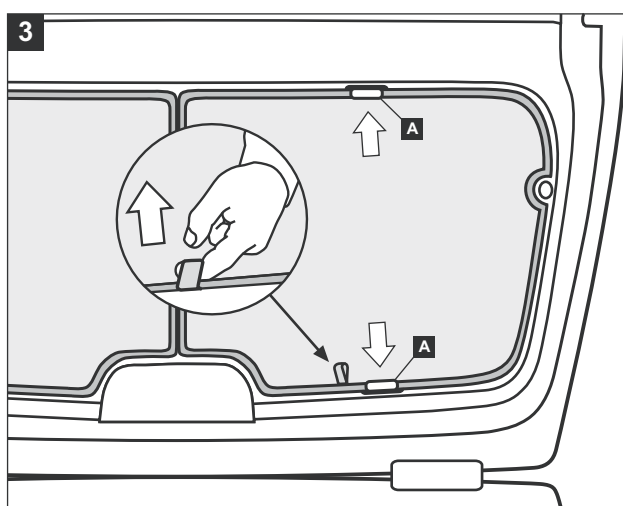
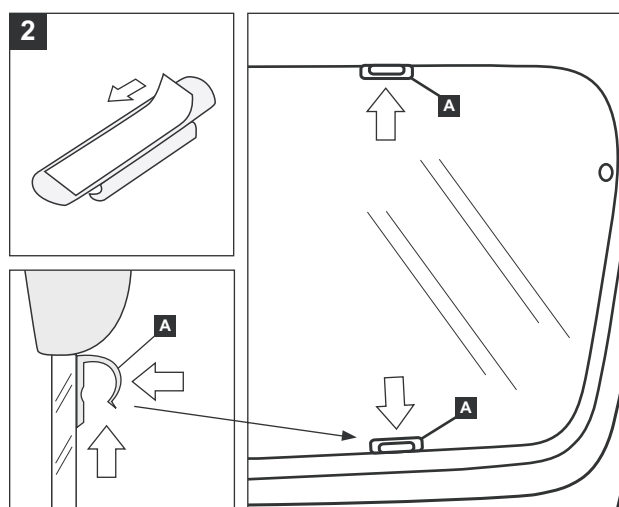
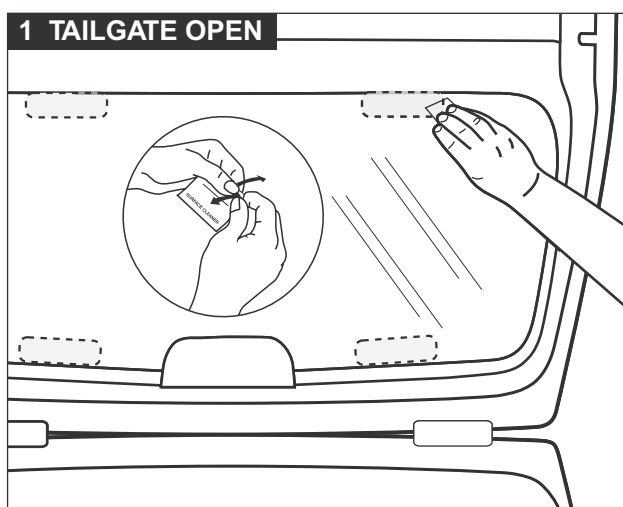
## HARDWARE KIT



## Warning

Read these fitting instructions carefully before you start the installation. Rear passenger windows must not be lowered more than 1/3 whilst the blinds are fitted and the vehicle is in motion. Blinds must not be used during the hours of darkness. On installation care must be taken not to scratch any paintwork with clips.

# JAZZ - SUN BLIND INSTALLATION INSTRUCTIONS



## WARNING:

Read these fitting instructions carefully before you start the installation. Rear passenger windows must not be lowered more than 1/3 whilst the blinds are fitted and the vehicle is in motion. On installation care must be taken not to scratch any paintwork with clips.

