

Installation Manual

JAGUAR E PACE 5 DOOR
JAG-EPAC-5-A



Shades



Side Shades



Port Shades



Tailgate Shades

Fixing Clips



CL-M02 x 6



CL-M12 x 2



CL-M04 x 4



CL-M14 x 1

Installation

JAGUAR E PACE 5 DOOR
JAG-EPAC-5-A

Components Needed



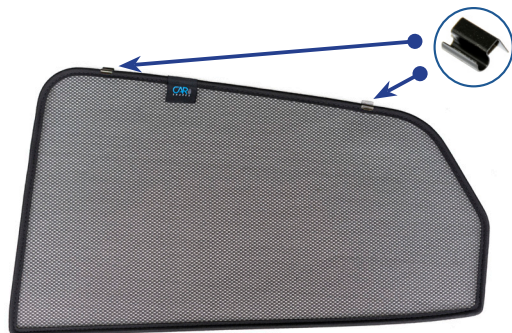
Side Shades



CL-M04 x 4

Side Shade Installation

STEP 1



STEP 2



STEP 3



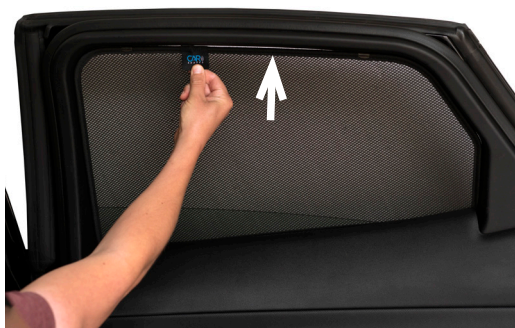
STEP 4



STEP 5



STEP 6



Installation

JAGUAR E PACE 5 DOOR
JAG-EPAC-5-A

Side Shade Installation

STEP 7



View from the outside. Ensure clips are behind seals.

STEP 8



Ensure shade fits into the window channel

STEP 9



Repeat this whole process for the other side.

Installation

JAGUAR E PACE 5 DOOR
JAG-EPAC-5-A

Components Needed



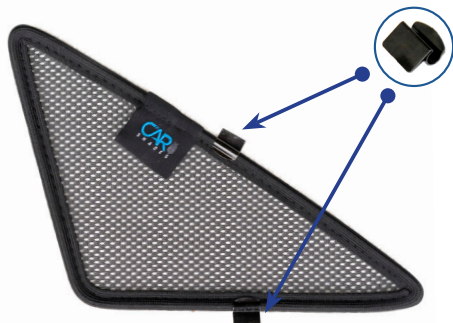
Port Shades



CL-M02 x 4

Port Shade Installation

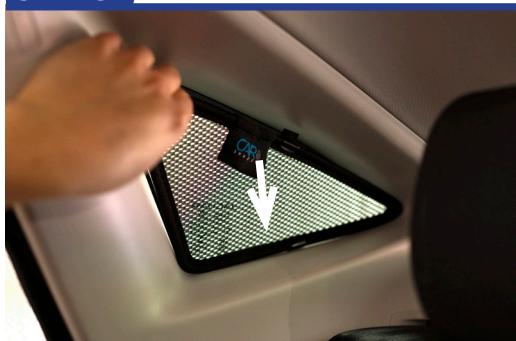
STEP 1



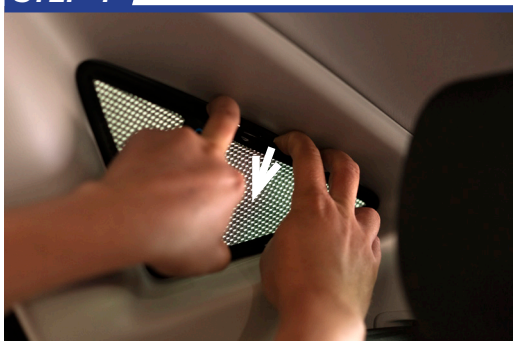
STEP 2



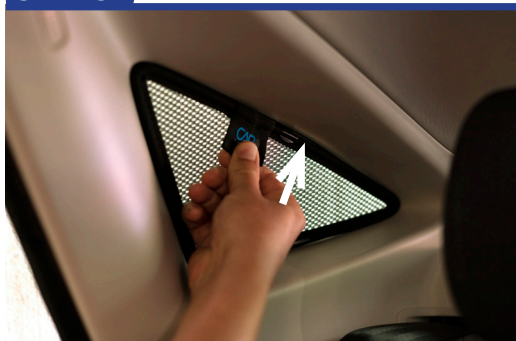
STEP 3



STEP 4



STEP 5



STEP 6



Repeat this whole process for the other side.

Installation

JAGUAR E PACE 5 DOOR
JAG-EPAC-5-A

Components Needed



Tailgate Shades



CL-M02 x 2



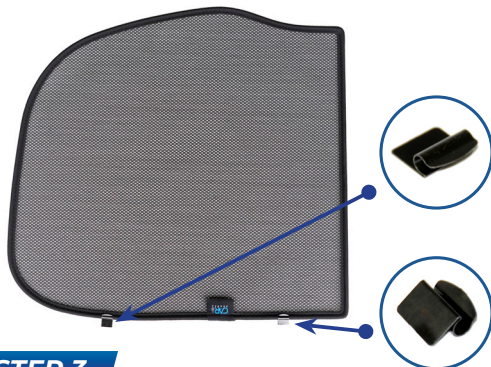
CL-M12 x 2



CL-M14 x 1

Tailgate Shade Installation

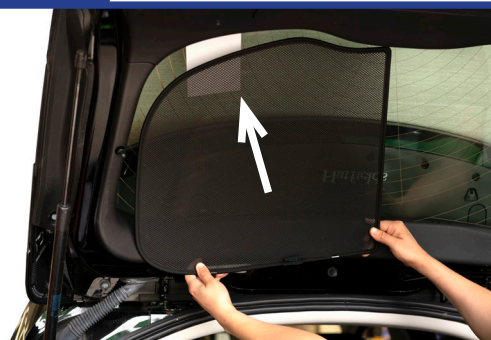
STEP 1



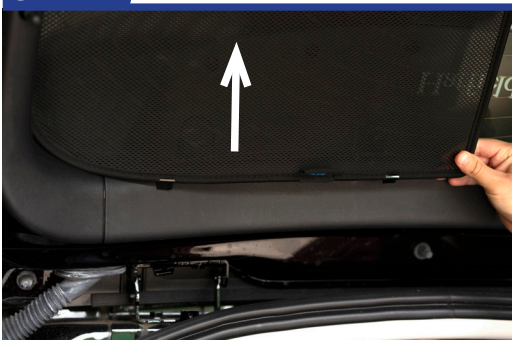
STEP 2



STEP 3



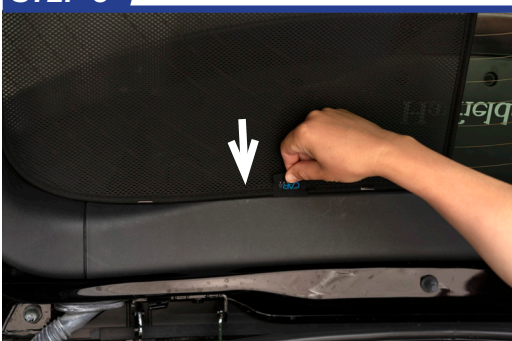
STEP 4



STEP 5



STEP 6



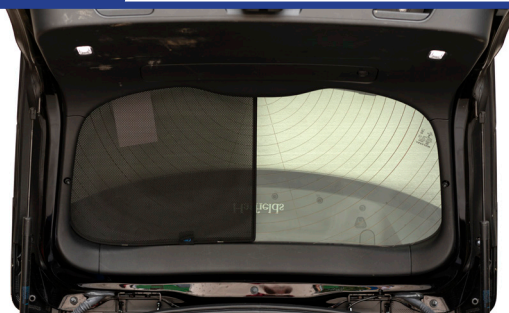
Installation

JAGUAR E PACE 5 DOOR

JAG-EPAC-5-A

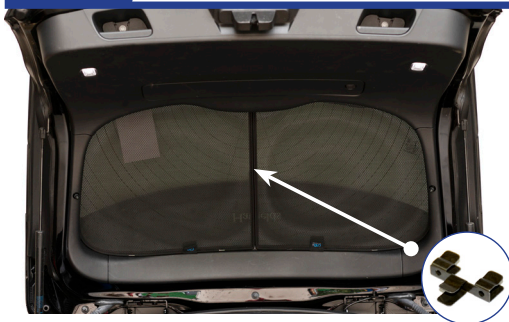
Tailgate Shade Installation

STEP 7

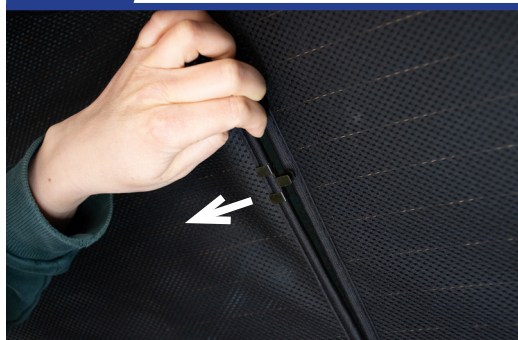


Repeat this whole process for the other side.

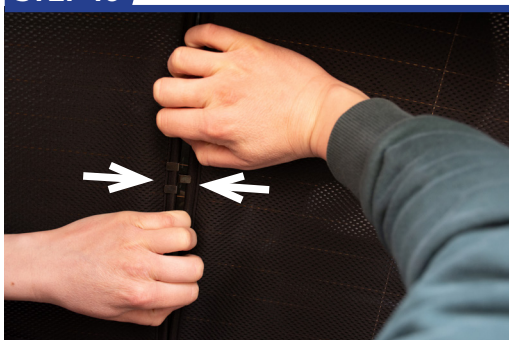
STEP 8



STEP 9



STEP 10



STEP 11

