

RANGE ROVER SPORT | SUV

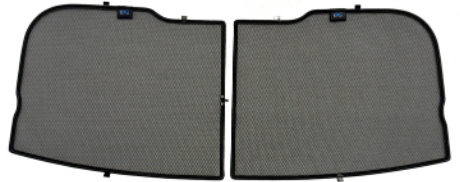
LRO-RRS-5-C



Included Components:



Side Window Shades



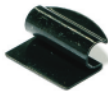
Tailgate Shades



Port Window Shades



M01 x2



M02 x4



M03 x2



M04



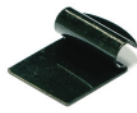
M05



M09



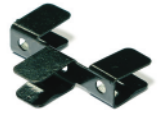
M11



M12 x6



M13 x2



M14 x1



P01



P02



CLEANER

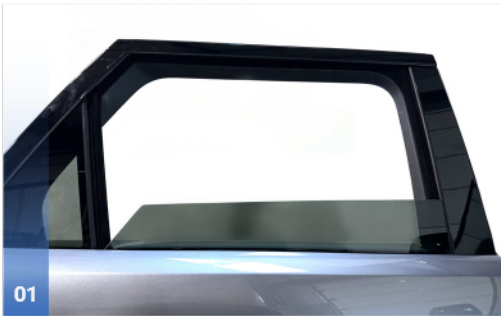
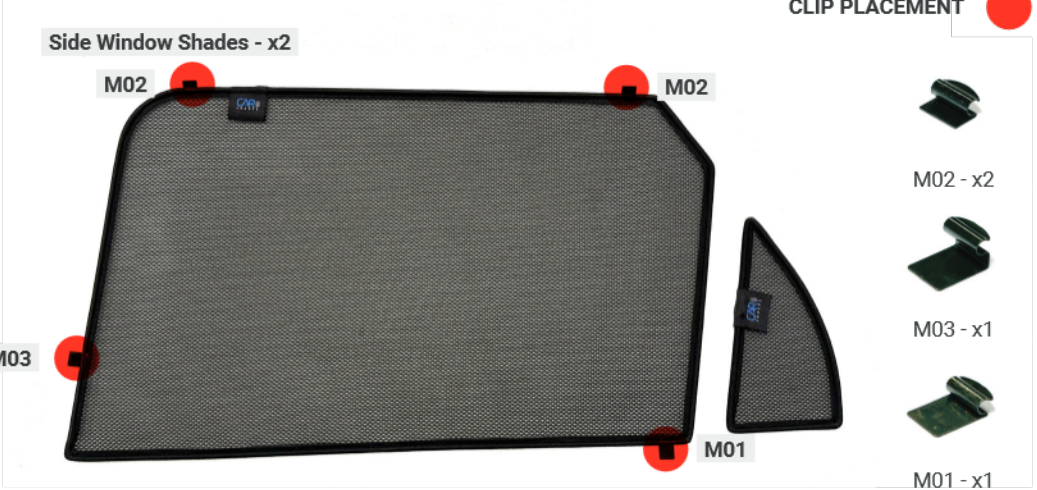


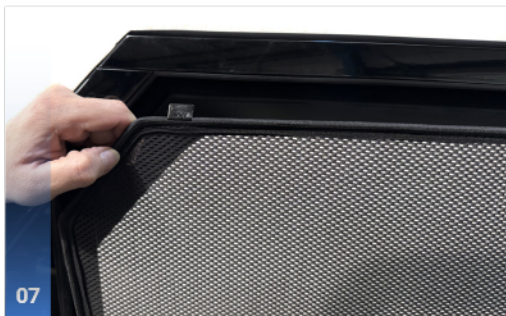
TRIM TOOL

RANGE ROVER SPORT | SUV

LRO-RRS-5-C

Side Windows









RANGE ROVER SPORT | SUV

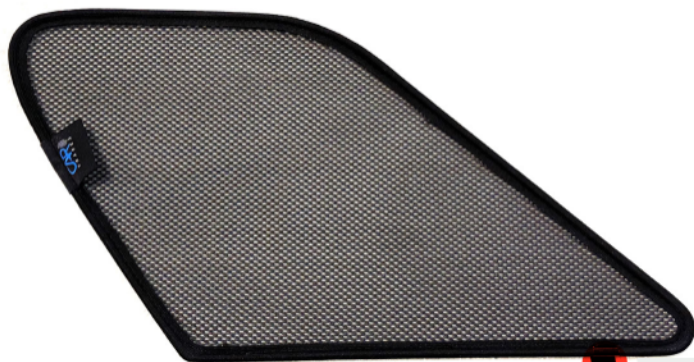
LRO-RRS-5-C

Port Windows

CLIP PLACEMENT



Port Window Shades - x2



M13- x1



01



02

Position clip in order for the shade to rest on the shelf of interior trim.



Push the shade towards the rear of the car to fill the window aperture.



Pull the front edge forward but do not push flush to the glass.



The Shade should look as shown in the image.

RANGE ROVER SPORT | SUV

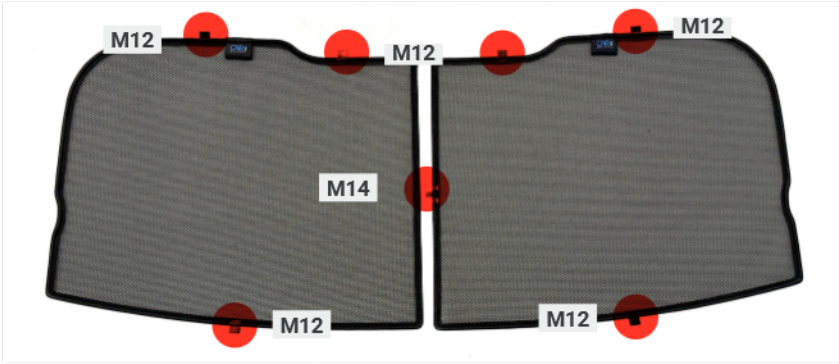
LRO-RRS-5-C

Tailgate Window

CLIP PLACEMENT



Tailgate Shades - x2



M12 - x6



M14 - x1

