

## FUNCTIONS AND SERVICING

Protective screens for car windows are designed for car saloon protection, also protection of the passengers inside from the sun, insects, glass fragments and protection of a private life in a vessel.

## SPECIAL ASPECTS OF SERVICING

- It is not recommended to use the front side protective screens on-the-ride
- It is not recommended to flick cigarette ash, dump the trash out of the windows with protective screens installed, if they are not equipped with special cutaways. It may cause textile cover damage.
- In winter (during cold weather), in a not warmed-up saloon, the material of protective screens may hang down (textile peculiarity). This defect vanishes after your warm-up the vehicle.
- It is not recommended to make a physical impact on textile cover of protection screens (jamming, transfixion etc.) as it may cause its damage.

## Parasol**del**coche Protective Screens Maintenance

In case of impurity of protective screens surface (material 2) it is recommended to wash it in the stream of water (high pressure stream possible), then dry it.

In case of impurity of protective screen textile surface (other materials) it is recommended to wipe it with a wet tissue or a sponge.

In case of substantial impurity the usage of mild detergents or soaps.

## Parasol**del**coche Protective Screens Storage

A set of Laitovo protective screens when not used doesn't require any special storage conditions and can be stored in a convenient place.

It is recommended to store protective screens in a special bag for Laitovo protective screens

Protection screens and components should not be stored close to the open fire, sharp and cutting objects and in high-humidity premises.

## Protective Screen Dismantling

### For protective screens installed into the clip-holders:

1. Grasp the loop in the upper part of a screen.
2. Slightly pull the edge of the screen toward the center so that it can be taken out of the clip-holder.
3. Take off the protection screen out of the holder-zone of a clip-holder.
4. Take off the protective screen out of the rest of clip-holders.

### For protective screens installed into the brace:

1. Grasp the loop in the upper part of a screen.
2. Slightly pull the edge of the screen toward the center.
3. Take out the upper part of the screen.
4. Take out the entire protective screen.

Tag sample

Protective screen for car windows AUDI 100 4G 4A C4 AVANT 5D STATION WAGON (1990-1994) FD (№2 STANDARD)	
Type of fixing :C	
EN	FD-A-686-1-2

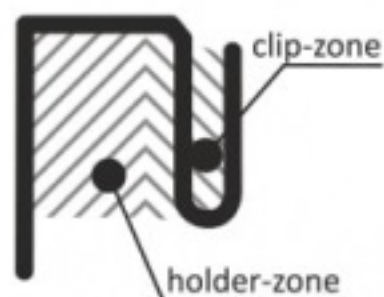
type of fabric  
 package  
 type of fixing



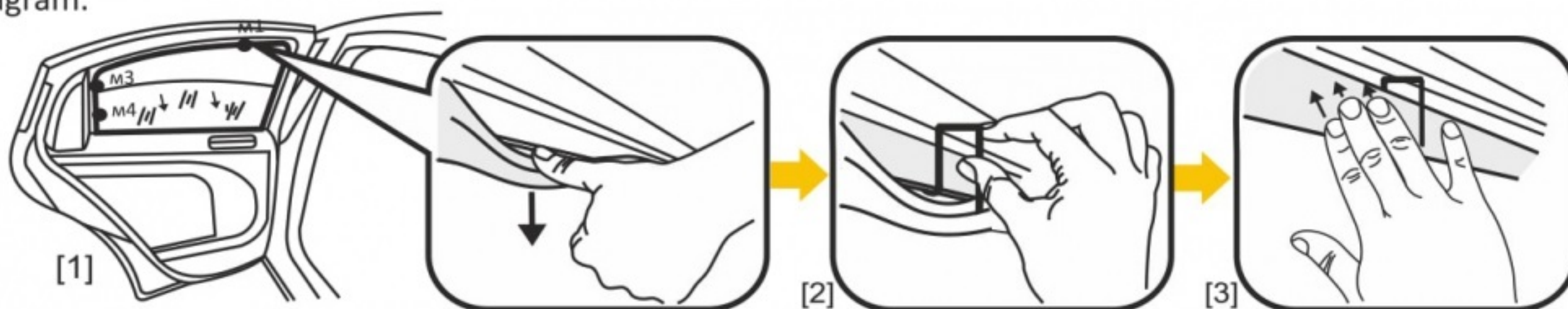
It is strongly recommended before installing clip-holders and protective screens to make sure that you have purchased a set that is in congruence with your car model. Try to fit the protective screen to car windows beforehand (look p.2 for example). There are 3 major fixing types.

## TYPE OF FIXING

A(1)

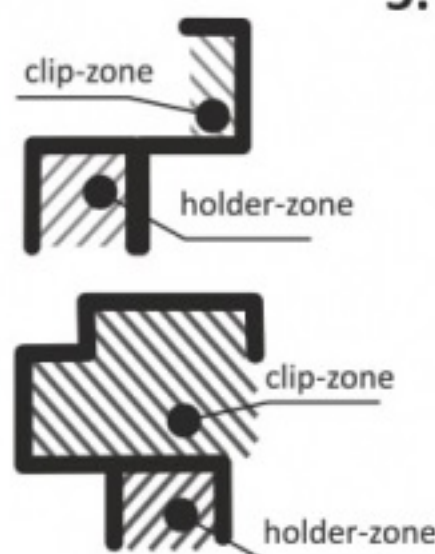


1. While installing open the door and put down the glass in the lower position [1];
2. Unbend a rubber weatherstrip located in the door window frame in the 1st position of installation of a clip-holder [1] to bare a window-frame collar\*;
3. Fasten the clip-holder to the collar by the clip-zone [2];
4. Return a rubber weatherstrip into the original position [3];
5. Repeat steps 2-4 in the rest of positions\* of clip-holders installing, according to the clip-holders installation diagram.

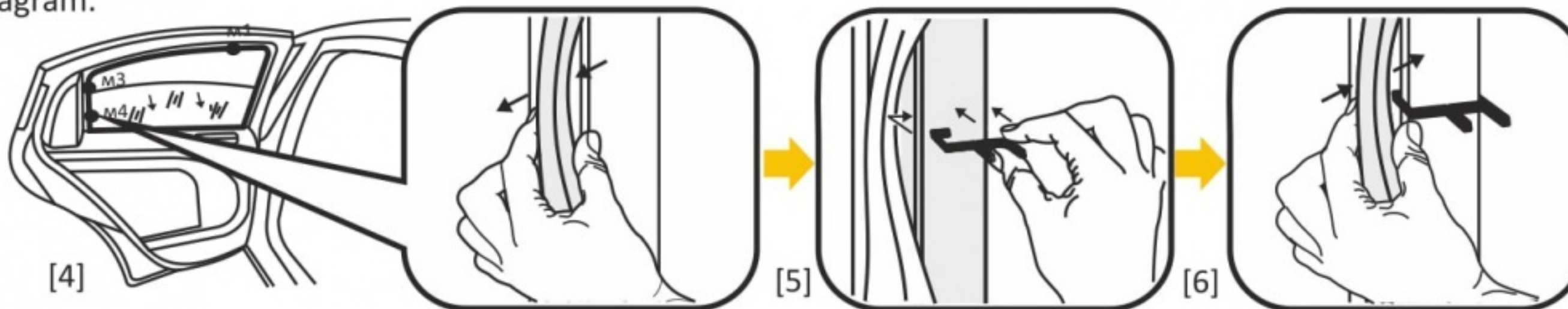


## TYPE OF FIXING

B(2)



1. Open the door and put down the glass of a vehicle in the lower position [4];
2. Take out a rubber weatherstrip located in the vehicle window frame in the 1st position\* of the clip-holder installation [4];
3. Hook the clip-holder to the window-frame collar [5];
4. Install a rubber weatherstrip into the original position [6];
5. Repeat steps 2-4 in the rest of positions\* of clip-holders installing, according to the clip-holders installation diagram.

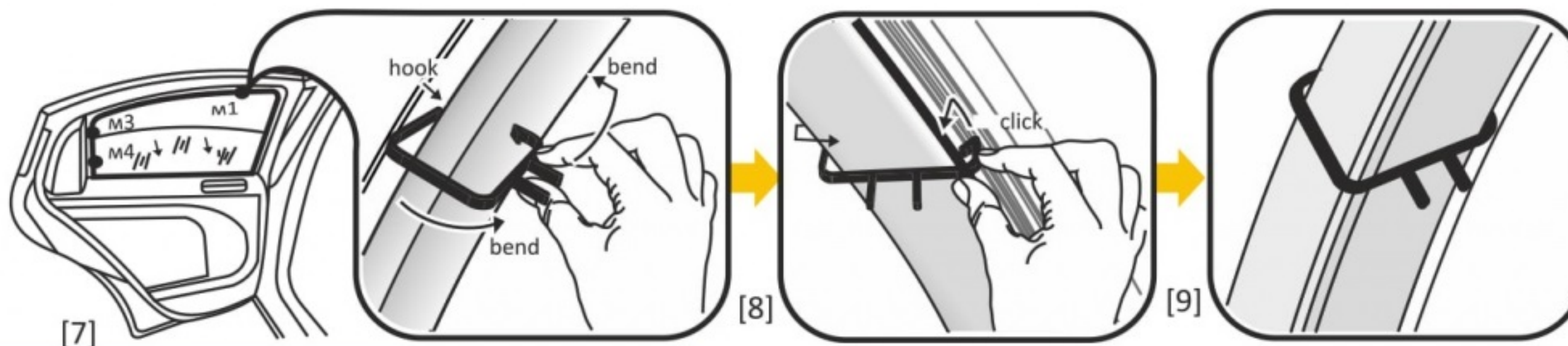
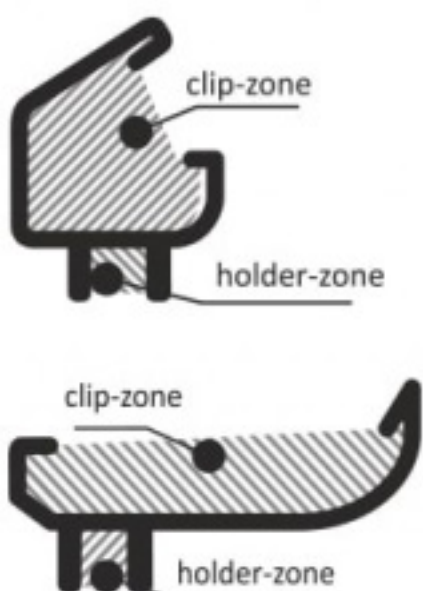




TYPE OF FIXING

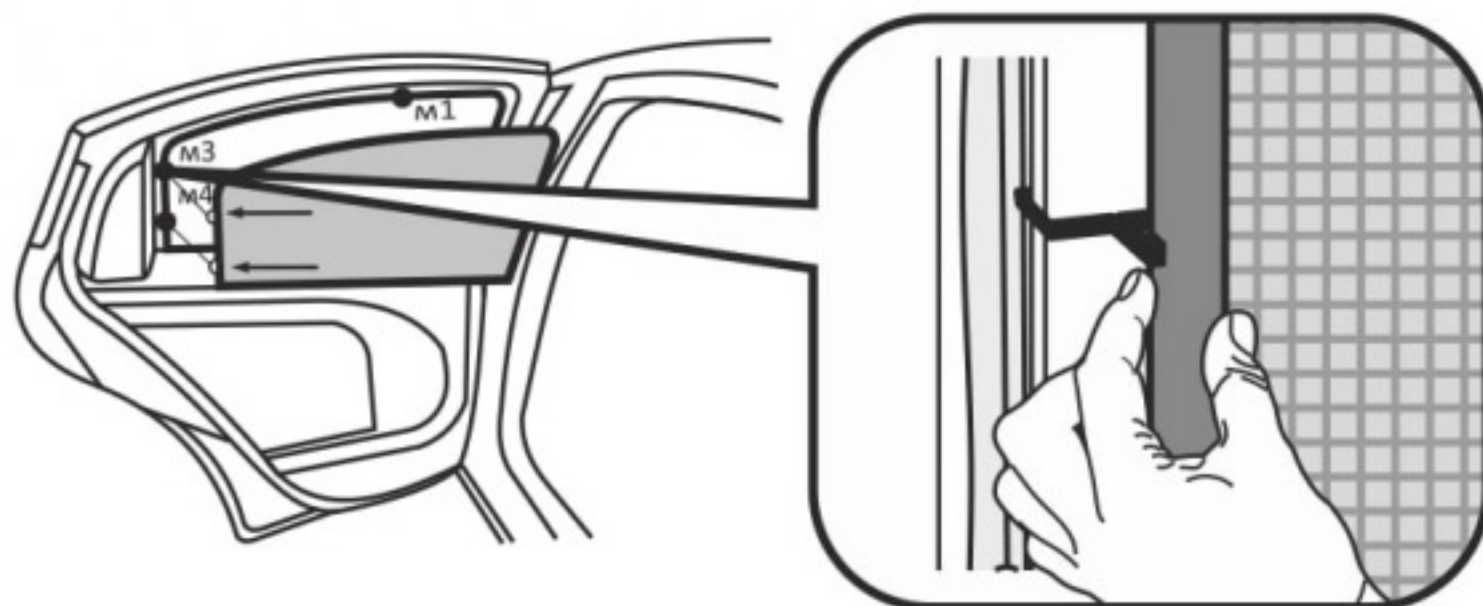
C(3)

1. While installing, open the door and put down the glass of a vehicle into a lower position [ 7 ];
2. In the installation position\* from the saloon side hook the edge of plastic cover by a special hook (included in the package);
3. Put a clip-holder into the bent edge of plastic cover [ 7 ];
4. Put the bend of a clip-holder to the edge of plastic cover and click the clip-holder [ 8 ], [ 9 ];
5. Take the hook, bend the edge of plastic cover, hook the clip-holder by the second bracing, take out the hook.
6. Repeat steps 2-4 in the rest of positions\* of clip-holders installing, according to the clip-holders installation diagram.



### Protective screen installation into clip-holders

1. Uplift the glass
2. Insert the frame of the protective screen into the clip-holders. It is better to be done one at the time: first the side edge of the screen, then the upper edge. The lower edge of the protective screen must be located on the cover without attachment to the clip-holders.

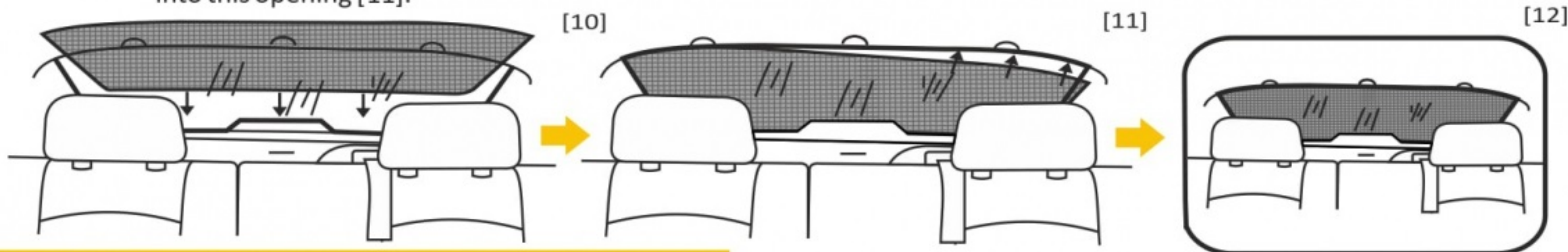




## Protective screens installation without clip-holders

Protective screen installation onto the rear windshield.

1. Put the lower part of the protective screen behind the breaklight (if there is any), behind the wiper cover (if there is any) or put it until tight into the lower part of the window adjoin the cover [10], [11];
2. Push the sides of the protective screen to the crossbar cover [11];
3. Tuck the upper part behind the car cover with the special hook (included in the package). To do this, carefully insert the hook between the frame (glass) and the cover, slightly pull the plastic cover and insert the frame of the protective screen into this opening [11].

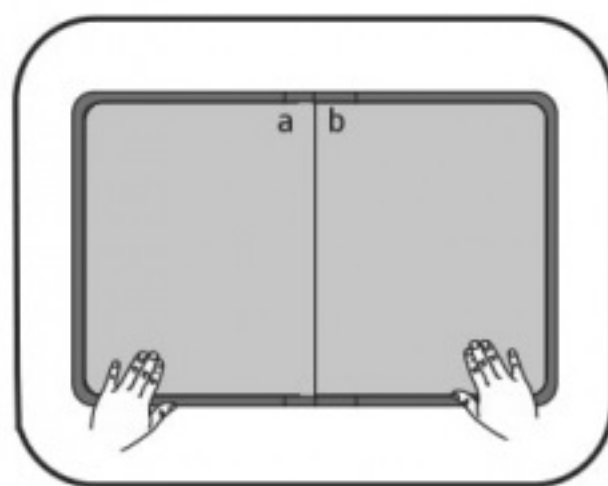


## FOLDING PROTECTIVE SCREEN FOR CAR WINDOWS

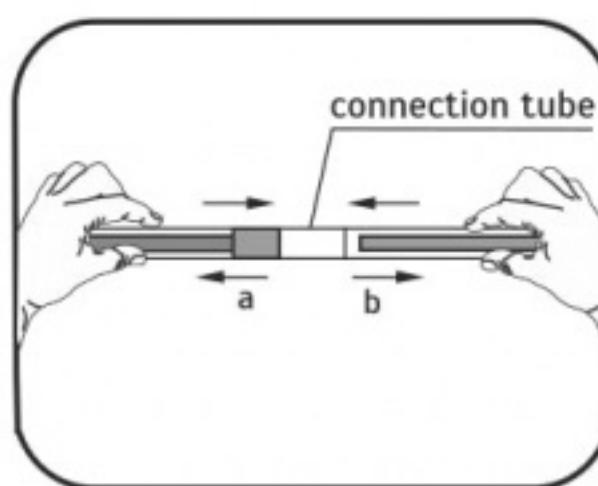
A FOLDING PROTECTIVE SCREEN has additional advantages for its transportation and storage due to the reduction of its dimensions. Fixation of two folding surfaces is completed with the help of the connection tube, located inside the cased frame.

### ASSEMBLING OF THE FOLDING PROTECTIVE SCREEN:

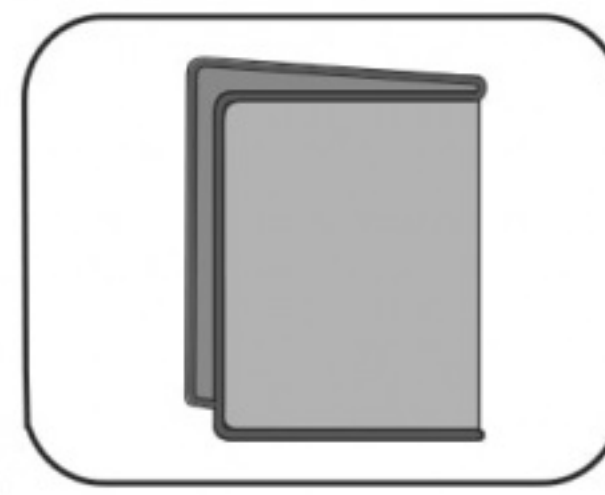
1. Unfold the screen (picture 1).
2. Insert detail a into the connection tube b in the upper part of the screen, as shown in picture 2 (connection tube is located under the rubber).
3. Fix the connection tightly
4. Repeat the same actions with the connection in the lower part of the screen.
5. The screen is assembled.



1



2



3

### DISASSEMBLING OF THE FOLDING PROTECTIVE SCREEN

1. Take the screen with both hands from different sides of the connection as shown in picture 2.
2. Pull to the opposite directions from the connection, until the inside frame comes out of the connection.
3. Repeat the same actions with the lower part of the screen.
4. Fold the screen (picture 3).