

# Installation Manual

NISSAN QASHQAI 5 DOOR  
NIS-QASH-5-C



## Shades



Side Shades



Port Shades



Tailgate Shades

## Fixing Clips



CL-M02 x 8



CL-M03 x 4



CL-M14 x 1

# Installation

NISSAN QASHQAI 5 DOOR  
NIS-QASH-5-C

## Components Needed



Side Shades



CL-M03 x 4



CL-M02 x 4

## Side Shade Installation

### STEP 1



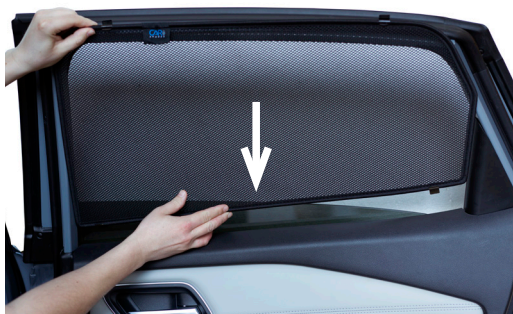
### STEP 2



### STEP 3



### STEP 4



### STEP 5



### STEP 6



# Installation

NISSAN QASHQAI 5 DOOR  
NIS-QASH-5-C

## Side Shade Installation

### STEP 7



### STEP 8



### STEP 9



### STEP 10



**Repeat this whole process for the other side.**

# Installation

NISSAN QASHQAI 5 DOOR  
NIS-QASH-5-C

## Components Needed



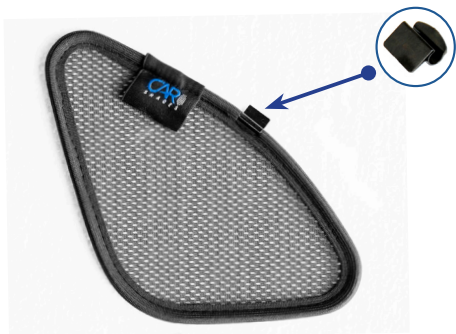
Port Shades



CL-M02 x 2

## Port Shade Installation

### STEP 1



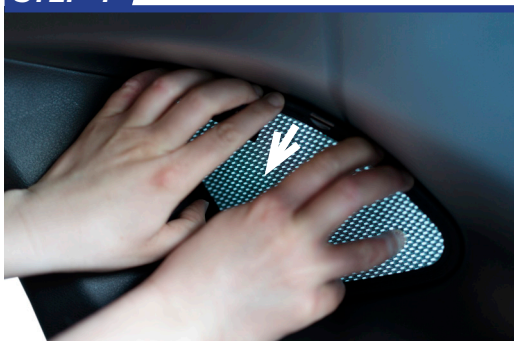
### STEP 2



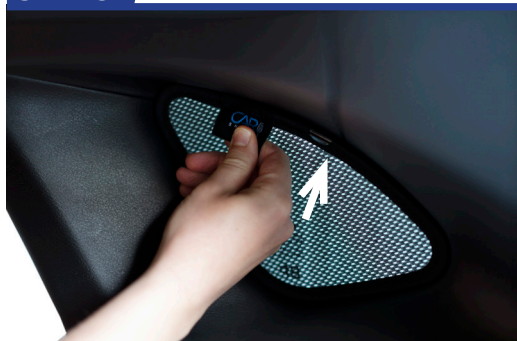
### STEP 3



### STEP 4



### STEP 5



### STEP 6



Repeat this whole process for the other side.

# Installation

NISSAN QASHQAI 5 DOOR  
NIS-QASH-5-C

## Components Needed



Tailgate Shades



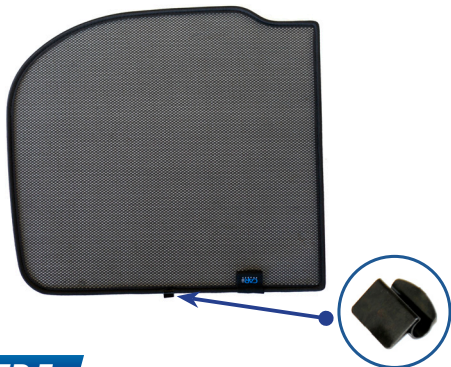
CL-M02 x 2



CL-M14 x 1

## Tailgate Shade Installation

### STEP 1



### STEP 2



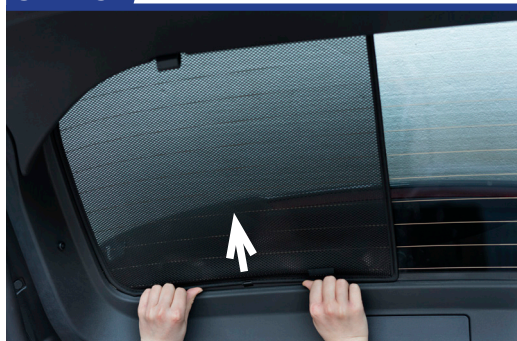
### STEP 3



### STEP 4



### STEP 5



### STEP 6



# Installation

NISSAN QASHQAI 5 DOOR  
NIS-QASH-5-C

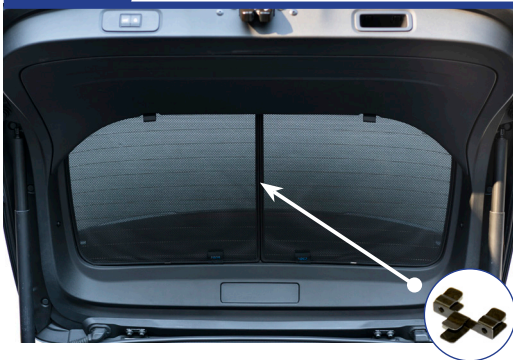
## Tailgate Shade Installation

### STEP 7

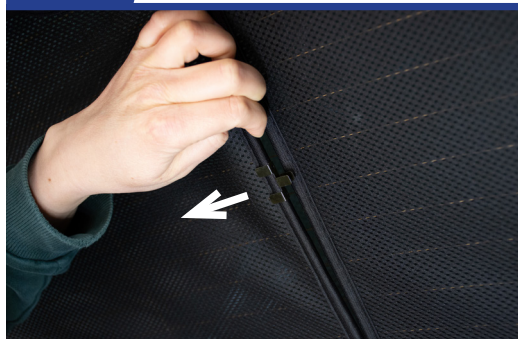


Repeat this whole process for the other side.

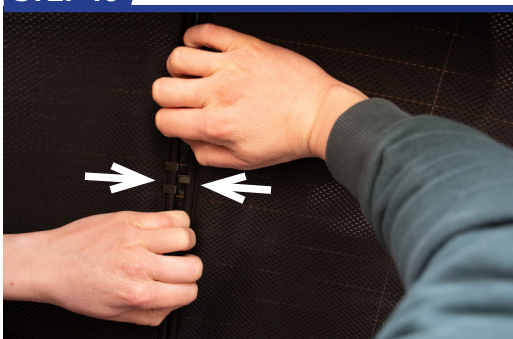
### STEP 8



### STEP 9



### STEP 10



### STEP 11

